

POST 16 AT CVCC

2024
PROSPECTUS


Ofsted
Good rating

ClystVale
COMMUNITY COLLEGE
A Science, Maths and Computing Academy

WELCOME TO CLYST VALE

CONTENTS

Welcome from the Head of Sixth Form	03
Introduction to Post 16 at Clyst Vale	04
How to choose your Post 16 Course	05
Courses available	06
Reporting assessment & target setting	07
Wider Post 16 curriculum	08
Additional courses & opportunities	09
Reasons to study at Clyst Vale	10
How to apply	11

COURSES

Applied Science	12	Performing Arts	26
Biology	13	Photography	27
Chemistry	14	Physical Education	28
Computing	15	Physics	29
English Literature	16	Politics	30
Environmental Science	17	Product Design	33
Fine Art	18	Psychology	34
French	19	Religious Studies	35
Geography	20	Sociology	37
History	21	Spanish	38
Mathematics	22	Level 3 Extended Project Qualification	39
Further Mathematics	23		
Music	25		



Thank you for your interest in Post-16 studies at Clyst Vale Community College.

Our Post-16 provision at Clyst Vale provides students with a real sense of community and belonging. With just over 100 students we are a small sixth form, and as a result can offer real support and guidance to all of our students. Both students from our lower school, as well as external students, join the sixth form and are attracted by the individual approach on which we pride ourselves. New students are made very welcome and settle in quickly – all expressing how friendly the environment is.

Support for sixth form students includes high quality careers advice and guidance and a range of additional activities, to promote personal and social development and to prepare them for adult life and university. The majority of Year 13 students have applied to top universities this year, reflecting high aspirations.

We are justifiably proud of the quality of our teaching and the good relationships established with students. In our student voice leavers' survey this year, 100% of students said that the teaching was excellent and teachers have impressive subject knowledge. Our most recent Ofsted inspection of 2022 confirmed that our provision in the sixth form remains 'Good', with an ambitious curriculum and strong personal development.

As Post-16 students you will be expected to show the motivation, determination and self-discipline necessary to succeed. There will be opportunities to develop leadership skills; to build on personal qualities and take roles of responsibility in preparation for life after Clyst Vale. We hope you take advantage of them.

I look forward to receiving your application.

Miss C Haynes,
Head of Sixth Form



POST 16 AT CLYST VALE

The curriculum, dress code, responsibilities and expectations of maturity mark our Post 16 students out from the rest of the College.

They are respected and enjoy privileges not made available to younger students; however, more freedom brings with it responsibilities. Post-16 students are inevitably seen as role models by all other students and are called upon to be ambassadors in their dealings with visitors and in their conduct around and outside the College.

Post-16 students have their own block within the College with a Study Area, Café, and a purpose built ICT suite. Post-16 meet as a whole group for assemblies and tutorials. Both tutor groups and teaching groups are relatively small meaning that students can be individually monitored and counselled.

The Post-16 curriculum offers a wide range of courses leading to Higher Education and employment. We offer Level 3 A Level and BTEC qualifications; top performing students may also take AS certification on an individual basis. Students have the advantage of working within an intimate and supportive environment that is also challenging and stimulating.

We run a comprehensive tutorial and enrichment programme, enabling our Post-16 students to make the transition from College to the adult world knowing that they have had an excellent start to their future careers.



HOW TO CHOOSE

How to choose your Post 16 courses

The decisions you make at this stage of your life will have important consequences for your future study and career opportunities. Therefore it is essential that any decision you come to is as well informed as possible. You may already have an idea of what you want to do in your life, or you may have no clear plans as yet. Either way, it is important when choosing your courses that you keep your options as open as possible.

You would be well advised to talk to your tutor, teachers, career advisor, read the course descriptions given in this prospectus, and ask about anything you do not understand.

In arriving at your decision, you are trying to balance three important factors:

- 1 YOUR ACADEMIC INTERESTS
- 2 YOUR PERSONAL ABILITIES, APTITUDES AND SKILLS
- 3 THE BREADTH OF CAREER CHOICE AVAILABLE TO YOU

If you have any queries, please talk to Miss Haynes, Head of Sixth Form, who will be happy to discuss option choices with students/parents/guardians at any time.



COURSES AVAILABLE

Level 3 Courses

We offer A-Levels, BTEC Level 3 courses and the Level 3 Extended Project qualification. All students must study at least 3 subjects at level 3, these can be all A-Levels, all BTECs or a combination of both.

A Levels

We offer a range of A2 Levels. These are a step-up from GCSEs and focus on academic subjects. They are highly valued by universities and employers, due to their rigorous nature. A2 levels are linear qualifications, which means that exams are taken at the end of Year 13. Some subjects offer AS levels for top performing students which are separate qualifications and do not count towards the A2 Levels, but are useful if you are thinking of studying four subjects. In terms of UCAS points they are worth 40% of an A2 Level.

BTEC Level 3

These are vocational qualifications in which students develop deep, specialist, practical skills and understanding. The work is assessed through coursework, case studies and presentations. They have an A Level equivalence and allow progression to university. UCAS points are awarded for the BTEC course (a Distinction is equivalent to an A, a Merit to a C and a Pass to an E at A Level). They can be taken as well as, or in place of, A Levels.

Entry Requirements

You will be expected to have at least the equivalent of 5 '9-4 grades' at GCSE. A grade 6 in the subject you intend to study at A Level is advisable. Please refer to the subject specific guidance.

GCSE Opportunities for Full Time Post-16 Students

Students who do not have a minimum of a grade 4 in English Language and/or Mathematics GCSE must now re-take these qualifications.

You should be aware that some lessons are taught after the normal end to the College day from 3.20pm until 4.20pm.

Very welcoming
to new students.



REPORTING, ASSESSMENT AND TARGET SETTING

There is a well-defined timetable for reporting, monitoring and setting individual student targets.

During the first part of the autumn term, students take part in one to one discussions with subject teachers and personal tutors to discuss individual targets and to help monitor the induction phase.

As part of our commitment to strengthening College and home links we hold a Year 12 'Welcome to Post 16' evening in September to provide parents/carers with the opportunity to meet Miss Haynes and the Tutors. The personal tutor is the first point of contact with the College so a good working relationship is important.

- Students receive three progress reports each year
- End of year examinations will take place in June for Year 12 & Year 13
- Parents' evenings are held in December for Year 13 and March for Year 12

In addition, in Year 12 & 13 there is a continuous monitoring system in operation. Subject teachers regularly report on students' effort, attainment and attendance, which are recorded by personal tutors.

The emerging profile of students' attainment and motivation is carefully scrutinised and any change in standards noted and acted upon immediately. In the first instance tutors investigate any problems. Should there be no immediate improvement Miss Haynes will offer further guidance.

Parents and guardians are welcome to contact the College at any time with queries related to student welfare and progress.

THE WIDER POST-16 CURRICULUM



All Post-16 students take part in a complementary curriculum, which aims to help students develop a broader perspective with opportunities to exercise leadership, assume responsibility and develop interests. The programme takes place during tutorial sessions and enrichment activities throughout the year.

Some of the key elements are:

Compulsory Enrichment

All Year 12 students will participate in a range of enrichment sessions over the year, timetabled on a fortnightly basis. Each student will have a block of Cooking, Active Leisure (to include things like golf, archery etc) and Practical Life Skills (to include fixing plugs and putting up shelves). This will work on a rotational basis and is a compulsory part of the Year 12 curriculum.

'The Bude Experience'

During the first half-term all Year 12 students are encouraged to participate in a week's residential course at Adventure International Outdoor Education Centre in Bude.

The students participate in outdoor activities ranging from abseiling to canoeing, team building exercises and problem solving tasks.

This provides an excellent opportunity for students to develop teamwork, leadership qualities and communication skills, as well as learning to work with others cooperatively in a range of situations. Historically this week has always been a huge success and students are invariably keen to repeat the experience.

Careers & UCAS Guidance

All students are given careers guidance. Those applying to University are guided through the application process, taken to the Higher Education Convention and on a Campus Visit. Those not applying have opportunities such as the Apprenticeship Roadshow and visits from employers to discuss particular careers. All students are given advice on CV/Personal Statement production and finance.

Programme of Talks

There is a full programme of outside speakers on a wide range of themes. Speakers from the world of politics, charity organisations, health, higher education and a range of professions will be invited to address Post-16 students.

Work Experience

All students are required to participate in blocks of work experience or job shadowing with the emphasis on individual choice related to career aspirations.

ADDITIONAL COURSES AND OPPORTUNITIES



Peer Mentoring

Post-16 students will support a younger student in several ways eg in class support, help with homework, to be a friend, to listen to them or help the student socialise.

Sixth Form Committee

The Sixth Form Committee consists of a group of students who represent both Year 12 and 13 - all students in Post 16 have the opportunity to put themselves forward to be on this. The Committee meets every week and organises events, fund-raising activities and deals with any issues raised by fellow students.

Gold Duke of Edinburgh Award

The Gold Duke of Edinburgh Award has been running at Clyst Vale for over ten years. It consists of 5 sections, 4 of which the students must organise themselves. When completing each section of their DofE, students should develop a programme which is specific and relevant to them. Costs will be involved with the expedition and for enrolling with the DofE award.

The DofE gives you the chance to do something completely new and improve on things you're already doing. It takes you out of your comfort zone and into a place where you'll push yourself and have amazing new experiences. You'll build confidence, resilience, skills for work and friendship groups. And you'll have a brilliant time doing it.

Looking forward, the DofE can help you to carve out a better future. Colleges, universities and employers regard a DofE Award highly so it will help to open the right doors for you. If you're keen to get off the sofa and put 100% into something that could change your life, then DofE is for you.

For more information go to www.DofE.org/DoDofE

Subject Support

Students can, with staff permission, help in lessons as a type of 'Student Learning Support Assistant'. This is most common in practical subjects, but can be in most subjects.

Sport & Recreation

All students are provided with the opportunity of using the College sports facilities. This often leads to students versus staff games and competitive matches against other Colleges.

Special Events

There are numerous events throughout the year. These include a Year 12 team building day and barbecue, and a Year 13 Prom attended by all the students, tutors and subject staff. It is worth noting that Post-16 students are regularly consulted over the provision of enrichment activities, as interests and particular skills vary from year to year. Every effort is made to accommodate student wishes.

16-19 Bursary Fund

We are allocated a cash-limited fund from central government which will be used wherever possible to provide support to those most in need, in order to enable a student to continue and complete their course.

Two types of award are available:

Guaranteed Award for Vulnerable Learners: Young people in Care, Care Leavers, Young People in receipt of Income Support or Universal Credit, and Disabled Young People in receipt of Employment Support Allowance who are also in receipt of Personal Independence Payment (PIP) will be eligible to receive a bursary of £1200 a year.

Discretionary Awards: Targeted at those who are facing the greatest financial hardship. (Discretionary Awards will only be used to help learners meet costs related to participation in their individual course of study, for example transport, books, equipment, materials, essential trips, meals whilst attending their course etc.)

REASONS TO STUDY AT CLYST VALE

- High standards, high expectations and academic rigour.
- Care, support and guidance recognised as outstanding.
- Excellent teaching staff who are supportive and know the students' strengths and weaknesses.
- Friendly atmosphere and a real sense of community.
- A wide range of courses and guidance provided to help students make the right choices.
- Advantageous small teaching groups, averaging 10 students.
- Intensive Higher Education guidance with proven track record of Oxbridge success.
- Stretch and Challenge programme for high achieving students.
- Extremely low dropout rate through careful monitoring of student progress, with individual support and attention.
- The Bude Residential experience
- Excellent purpose built facilities including study areas, café and ICT suite.
- Free text books provided for all students.
- Strong focus on Personal Development.
- Wide ranging Tutorial and Enrichment Programme.



**APPLICATION
FORMS SHOULD
BE RETURNED
BY FRIDAY 26TH
JANUARY 2024**
(Late applications
will be considered)

HOW TO APPLY

Follow the steps to make a successful application

- 1 Read the Post-16 Prospectus carefully.
- 2 Once you receive your Year 11 annual report you will have a good indication of the options open to you. At this point you should make an application using the online form available via our website.
- 3 Your application will be read by Miss Haynes, Head of Sixth Form.
- 4 Every applicant will be invited to a meeting to discuss the suitability of the subjects selected. Successful applicants will receive written confirmation of course offers.

Application forms should be returned by Friday 26th January 2024.
(Late applications will be considered)

If you have any queries: please contact the College – we will be pleased to help.

TELEPHONE 01392 462697.

APPLIED SCIENCE BTEC

Is this course for me?

Yes, if you are interested in the application of scientific ideas and how Science can be used to solve practical problems in the real world.

What qualifications do I need?

BTEC Level 2 Applied Science at Merit Standard or four GCSE grades (including English, Maths and Science) at grade A*-C / 9-4.

What does the course involve?

Year 12: BTEC Level 3 Certificate

Unit 1: Principles and Applications of Science
Unit 2: Practical Scientific Procedures and Techniques

Year 13: BTEC Level 3 Extended Certificate

Unit 3: Science Investigation Skills.

Plus **ONE** optional unit, chosen by the teachers, from:

Physiology of Human Body Systems, Human Regulation and Reproduction, Biological Molecules and Metabolic Pathways, Genetics and Genetic Engineering, Diseases and Infections, Applications of Inorganic Chemistry, Applications of Organic Chemistry, Electrical Circuits and their Application.

How will my work be assessed?

All work is graded as pass, merit or distinction which correspond to A Level grades E, C and A respectively.

Year 12

Unit 1 is externally assessed by an examination which will include multiple-choice, calculations, short-answer, and extended open-response questions. This will count towards just over half of the marks. You must achieve at least a pass in this exam in order to complete the course.

Unit 2 is internally assessed via assignments (projects, reports, posters, presentations to the group).

Year 13

Unit 3 is externally assessed by a task-based assessment in which you will demonstrate your skills of carrying out a scientific practical investigation to collect and record data.

The optional unit is internally assessed via assignments.

What can I do afterwards?

BTEC HNC or HND, Foundation Degree, Bachelor's Degree, NVQ or Science based employment such as laboratory technician.

EXAM BOARD > EDEXCEL



BIOLOGY

Is this course for me?

Yes, if you:

- Like a challenge
- Are prepared to meet deadlines
- Have a genuine interest in Biology
- Are motivated to study in your own time

What qualifications do I need?

You need to have a GCSE grade 66 in Combined Science, or a grade 6 in Biology GCSE. As well as grade 6 minimum in Maths and grade 5 in English.

What does the course involve?

Year 12

Module 1: Foundations in Biology

Cell structure, cell division, cell diversity and organisation. Biological molecules.

Module 2: Exchange and Transport

Exchange surfaces, transport in plants and animals.

Module 3: Biodiversity, Evolution and Disease

Classification, evolution and biodiversity. Diseases and the immune system.

Year 13

Module 4: Communication, Homeostasis and Energy

Nerves and hormones, excretion, photosynthesis and respiration.

Module 5: Genetics, Evolution and Ecosystems

Cells, variation and meiosis; biotechnology and the science of cloning and genomics; ecosystems and sustainability.

How will my work be assessed?

There will be three final examinations at the end of Year 13.

What can I do afterwards?

This course can lead on to further studies in Biological Sciences, Nursing, Physiotherapy and Medicine. It will give a good grounding for any further work in Science.

EXAM BOARD > OCR

CHEMISTRY



Is this course for me?

Yes, if you enjoyed the chemical aspects of your GCSE science course, you are willing to work hard, develop your thinking skills and learn independently. You need to be able to think logically and have strong literacy skills.

What qualifications do I need?

You need to have a GCSE grade 6 in Combined Science, **or** a grade 6 in Chemistry GCSE (separate sciences) as well as grade 6 minimum in Maths and grade 5 in English.

What does the course involve?

The course consists of 6 modules combined with a Practical Endorsement.

Module 1: Development of Practical Skills

Module 2: Foundations in Chemistry

Module 3: Periodic Table and Energy

Module 4: Core Organic Chemistry

Module 5: Physical Chemistry and Transition elements

Module 6: Organic Chemistry and Analysis

The topics studied are widely inter-linked and the developing patterns are a distinguishing feature of this subject. Practical work is used throughout the course to illustrate concepts and to develop technical and investigative skills.

How will my work be assessed?

There will be three written papers at the end of Year 13:

- Paper 1 assesses the content from Modules 1, 2, 3 & 5
- Paper 2 assesses the content from Modules 1, 2, 4 & 6
- Paper 3 assesses the content from Modules 1 to 6

What can I do afterwards?

Studying Chemistry opens up many career opportunities:

Chemistry, Biology, Physics, Medicine, Engineering, Dentistry, Forestry, Veterinary Science, Agricultural Science, Biochemistry, Biotechnology, Food Science, Pathology. If you want any science-based career, then Chemistry keeps your options open. Potential employers value the analytical and conceptual skills developed during the study of Chemistry. Such skills, coupled with the ability to work in a meticulous and accurate manner, enable Chemistry students to pursue careers within, or outside, the vast area of Science.

EXAM BOARD > OCR

COMPUTING

Is this course for me?

Do you have the patience to work at a problem until you solve it?

Are you curious about what's going on in your computer?

Do you use your computer at home for more than just surfing the net?

The course is designed to appeal to students who are curious about the inner workings and applications of computers, as well as to those students who wish to pursue a career in Computing.

What qualifications do I need?

You should be studying at mostly grade 5 or above to include Maths and English.

A grade 5 or above in a Level 2 computing course is desirable as is the ability to work in an organised manner and complete independent study.

Students without programming experience will need to complete pre-course tasks.

What does the course involve?

Year 12 study will include:

Computing principles

- Theory of computation
- Fundamentals of data representation
- Fundamentals of computer systems
- Fundamentals of computer organisation and architecture
- Consequences of uses of computing
- Fundamentals of communication and networking

Algorithms and Problem solving

These topics will be delivered alongside practical programming lessons

- Fundamentals of programming
- Fundamentals of data structures
- Systematic approach to problem solving

In Year 13 you will study advanced Computing theory and complete a software development project of your own choosing.

I wouldn't have chosen anywhere else to do my A-Levels.

Evie, Year 12

How will my work be assessed?

A2 assessment - 1 written exam and 1 on-screen exam and 1 project.

What can I do afterwards?

All students will benefit from the technical skills and insight gained on this course which are transferable to numerous careers both within the IT sector and outside.

Many of our students choose to extend their knowledge at university with a Computing related degree. This could lead to a career in software development or programming. Students may also use this as a stepping stone to vocational courses and apprenticeships.

Specification details

Full details can be viewed or downloaded at: www.aqa.org.uk

EXAM BOARD > AQA

ENGLISH LITERATURE



Is this course for me?

All students with the required grades should consider this course at A Level because it links into work already studied at GCSE. Those who enjoy reading will be stretched as they encounter a genuine variety of texts.

What qualifications do I need?

This demanding course requires students to have at least GCSE grade 5 in English Language and English Literature. A love of independent reading is also an essential requirement.

What does the course involve?

Three Units:

Love through the Ages

40% of A-Level | 3 hour examination (3 essays)

This focuses on three texts; Shakespeare, poetry and prose and will involve comparative analysis.

Texts in Shared Contexts

40% of A-Level | 2.5 hour examination (2 essays and one critical analysis of an unseen text)

This is the study of 3 texts; prose, poetry and drama from pre 1900 and post 2000.

Independent Critical Study: Texts across Time

20% of A-Level | Coursework

This comprises of two components:

- A comparative critical analysis of two texts (one of which must be pre 1900)
- An extended essay and bibliography

Typical texts on offer in the course would be:

Drama

Othello / A Doll's House / A Streetcar Named Desire / Oh! What a Lovely War / Top Girls / Journey's End / The Taming Of The Shrew / The Winter's Tale

Poetry

Up the Line of Death / Scars upon My Heart / Feminine Gospels / AQA Post 1900 Anthology / Remember / Ae Fond Kiss / Sonnet 116 / To His Coy Mistress

Prose

Regeneration / Wuthering Heights / Birdsong / Atonement / Jane Eyre / The Great Gatsby / The Handmaid's Tale / The Color Purple / The Help / Yellow Wallpaper

What can I do afterwards?

This course develops analytical thinking which is a crucial, transferable skill. Communicative competence and the ability to analyse are basic and necessary skills in the workplace and critical for those seeking positions of responsibility and leadership.

EXAM BOARD > AQA

ENVIRONMENTAL SCIENCE

Is this course for me?

Yes if you are interested in learning about the environment, and the scientific processes that control and affect it.

You will learn about Wildlife Conservation, Global Climate Change and Sustainability. This is for you if you want to know more about the challenges our planet faces and what solutions can be found.

What qualifications do I need?

You will need six GCSEs at grade 4 or above, including English Language and Maths and two Sciences.

What does the course involve?

You will study the following topics:

- The Living Environment: conservation, biodiversity and the impact of humans
- The Physical Environment: environmental impacts of human activities, and the development of new technologies.
- Energy Resources: how the future problems of energy supply can be resolved with new technologies in renewable resources.
- Pollution: environmental damage and the strategies used to minimise such damage.

- Biological Resources: how the challenge to provide food and forest resources for a growing human population can be met without damaging the planet's life support systems.
- Sustainability: the principles from all the above topics are developed into a holistic understanding of sustainability.
- Research methods: you will investigate a wide range of techniques used to study the environment.

How will my work be assessed?

There are two final exams at the end of year 13.

What can I do afterwards?

Your interest in the environment could take you along a number of career paths, including: ecology, wildlife conservation, environmental impact assessment, aquaculture, local government, town planning and transport design.

If you choose to progress into higher education you will have opportunities to enter new fields such as ecotoxicology, climatology, geobiology or marine biology.

EXAM BOARD > AQA

The teachers are great, they respect students and vice-versa.

FINE ART

Is this course for me?

Taking Fine Art as an A Level at Clyst Vale means that you are joining a popular course which has a track record of outstanding results. You will have the opportunity to experiment and develop your artistic abilities, learn new practical skills and processes and work on an ambitious scale. Fine Art may give your option choices a good balance, or may lead to further studies and a career in the artistic industries. It is also possible to do a one or two year AS qualification which can add greater flexibility to your option choices.

What qualifications do I need?

It is desirable to have a grade 5 or above in GCSE Art and Design.

What does the course involve?

Year 12 - Coursework project that enables students to explore skills and develop their own ideas.

Year 13 - Coursework project that develops ideas into a final outcome. You will also need to complete a personal study along with supporting research and practical outcomes. Research sketchbook on exam theme leading to a controlled test of 15 hours.

How will my work be assessed?

A Level work is continuously assessed and summative assessment is made at the end of projects and units. 60% of your final grade comes from coursework and 40% is based on the externally set exam set at the end of Year 13.

AS Level is 100% coursework with no exam.

What can I do afterwards?

Students may wish to continue their education in Art & Design at University or may look to do a Foundation Diploma at Art College.

Skills developed on your course, such as research, negotiation, problem solving and teamwork can put you in direct competition with more traditional graduates giving you an even greater pool of opportunities to consider.

Even within art design & media, there is still flexibility. Graphic designers may chose to use their design skills in gardens or interiors, and fine artists have been known to become well-established filmmakers. It may be that you will choose to practice in several different areas - what is known as a portfolio career.

There are over 70 art related careers. They all relate directly to the creative industry. The creative industry is the 2nd largest industry in Britain – and growing!

Example Careers and Courses in Art and Design:

Graphics, advertising, illustration, fashion, fashion marketing, education, television, product design, stage design, art restoration, film, admin/curation, ceramics, art therapy, art history.

EXAM BOARD > Eduqas



FRENCH

Is this course for me?

If you enjoy speaking French and you want to discover more about France and French-speaking countries, their language and their people, this is the course for you!

What qualifications do I need?

At least a grade 6 in French at GCSE.

What does the course involve?

The course will involve the same four skills as the GCSE: reading, writing, listening and speaking. Each is worth 25% of the total grade. You will have the chance to work on journalistic texts taken from the French press and media, and to express your own opinions on topical issues. Cinema and literature are an important part of the course.

The aims of the course are to encourage students to:

- develop an interest in, and an enthusiasm for, language learning
- develop a wider understanding of French in a variety of new contexts
- communicate confidently, clearly and effectively in French for a range of purposes
- develop awareness and understanding of the contemporary society of France and French-speaking countries.

How will my work be assessed?

All aspects of the course are assessed through an external exam at the end of the period of study.

You will sit three papers:

Paper 1: Listening, reading and translation

Paper 2: Speaking

Paper 3: Writing, which involves translation and grammar exercises, as well as responding to questions on a literary text and a film in the French language.

The speaking exam is recorded and marked externally.

What can I do afterwards?

Not only is it a subject that is very highly regarded by universities, but it is also one of the only subjects to complement almost any other qualification. Many universities offer the opportunity to learn a language as part of other degree courses, and an A Level in French or Spanish can even open up the chance to start studying a completely different language from scratch.

It is a mistake, however, to see languages as only being useful as a stepping stone to university or if you want to work in the travel industry, hospitality and catering, or business studies. Languages can also open up careers in areas from speech and language therapy to forensic linguistics, and having another language could even increase your salary by up to 20%.

EXAM BOARD > AQA

GEOGRAPHY

Is this course for me?

If you are looking for a dynamic course that explores the interaction between the physical and human elements of our planet then A level Geography is for you. It will give you a chance to explore some of the challenges facing people in today's world including population pressure, resource security, changing climates and hazard management. It will equip you with the skills to critically analyse data and draw sound, valid conclusions. It will allow you to discuss major events that shape our world on a regular basis, whether they are physical (earthquakes, sea level rise) or human (global conflicts, urban living).

What qualifications do I need?

A grade 5 in English and Mathematics is required, as is a grade 5 in Geography. However it is NOT essential to have done Geography at GCSE as long as you have a grade 6 in Science.

What does the course involve?

The course involves an equal mix of physical and human topics. There is also a mixture of core and optional topics. The core topics are Water and Carbon cycles, Global systems and global governance and Changing Places.

The optional units that we study are Hazards, Glacial systems and landscapes and Population and the environment.

You have to complete a minimum of 4 days fieldwork. This ranges from a residential visit taking place in Year 12 to Swanage, to day trips in Plymouth and the FSC in Slapton.

How will my work be assessed?

The course is a 2-year linear A level. Assessment consists of 2 papers with a mixture of multiple choice, structured short-answer questions and longer extended written response questions. Both papers are 2.5 hours long and are worth 40% each. There is also a 3000-4000 word individual geographical investigation which is 20% of the A level. This is completed through fieldwork and individual research. It will prepare you for both university and work.

What can I do afterwards?

There are a vast number of routes that Geography can open up for you. It is a highly valued qualification by employers and Universities alike. Geography was rated as the most employable subject in a survey of university graduates. It doesn't tie you down as it is counted as an art and a scientific subject. The skills that you acquire can lend themselves to careers such as GIS Specialist, Chartered Surveyor, Lawyer or Environmental Planners amongst others. The topics covered could lead to careers as diverse as Economic Developer, Forestry Ranger, Weather Presenter or Hazard Manager.

EXAM BOARD > AQA



HISTORY

Is this course for me?

If you are interested in people and how they lived in the past, if you are interested in how events in the past have shaped the world in which we live, if you enjoy reading and writing essays then this is the course for you.

What qualifications do I need?

Students are required to have achieved a grade 6 or above in GCSE History. Those students who have not studied History before are required to have achieved at least a grade 5 for English.

What does the course involve?

The topics covered are;

The Tudors; England 1485-1603

The American Dream; Reality and illusion 1945-1980

Coursework on any period of history to cover 100 years.

How will my work be examined?

This is a two year course. The final grade will be based on the exams at the end of year 13.

Two written exams of 2 hours 30 minutes.

Coursework will count as 20% of the final A level marks.

What can I do afterwards?

History A level is an important qualification for a wide range of higher education and career choices. The skills involved in the study of History at A level are highly regarded by universities and employers. History provides an excellent foundation for a wide range of careers such as the law, journalism, business and teaching.

EXAM BOARD > AQA

MATHEMATICS

Is this course for me?

If you are an interested mathematician who has coped well with GCSE and enjoy solving problems and the challenge of applying your existing mathematical skills in more complicated situations, then this is the course for you.

What qualifications do I need?

If you expect to attain a grade 6 or more at GCSE Mathematics (Higher Tier), this could be the course for you.

What does the course involve?

Here is your opportunity to find out about new concepts such as mathematical modelling and the whole new world of calculus.

You will also have the opportunity to develop skills you already have, especially those in algebra and trigonometry. You will be involved in both practical and investigative work. To help you in this, you will have access to mathematical software, we do, however, expect you to provide a scientific calculator. You will need to buy a Casio FX-991EX calculator.

The course we will be offering is designed to cater for the student who wishes to study mathematics in its own right. We will be following the OCR A scheme of work.

The subject content is divided into three areas: Pure Mathematics, Statistics and Mechanics. The over arching themes must be applied, along with associated mathematical thinking and understanding, across the whole of the subject content.

How will my work be assessed?

To obtain an AS level, students successfully need to complete 2 exams at the end of Year 12:

Pure Maths and Statistics - 1.5 hour written paper

Pure Maths and Mechanics - 1.5 hour written paper

To obtain an A level, students successfully need to complete 3 exams at the end of Year 13:

Pure Maths - 2 hour written paper

Pure Maths and Statistics – 2 hour written paper

Pure Maths and Mechanics – 2 hour written paper

What can I do afterwards?

An A Level in Mathematics is accepted as an entry qualification to almost any University course, from Medicine to Astrophysics.

EXAM BOARD > OCR

We support one another, it feels like family.

FURTHER MATHEMATICS

Is this course for me?

This course is an ideal basis for the study of Mathematics at University. On some courses Further Maths is a requirement.

What qualifications do I need?

If you expect to attain at least a grade 7 in GCSE Mathematics, this could be the course for you. Further Mathematics should be taken alongside A level Mathematics.

What does the course involve?

The course follows on from GCSE and uses some of the ideas covered in the Mathematics A level, which it builds upon to cover complex and abstract mathematics by Year 13. Some of the options are abstract whilst others are quite practical. Class sizes are typically small, providing a supportive environment.

How will my work be assessed?

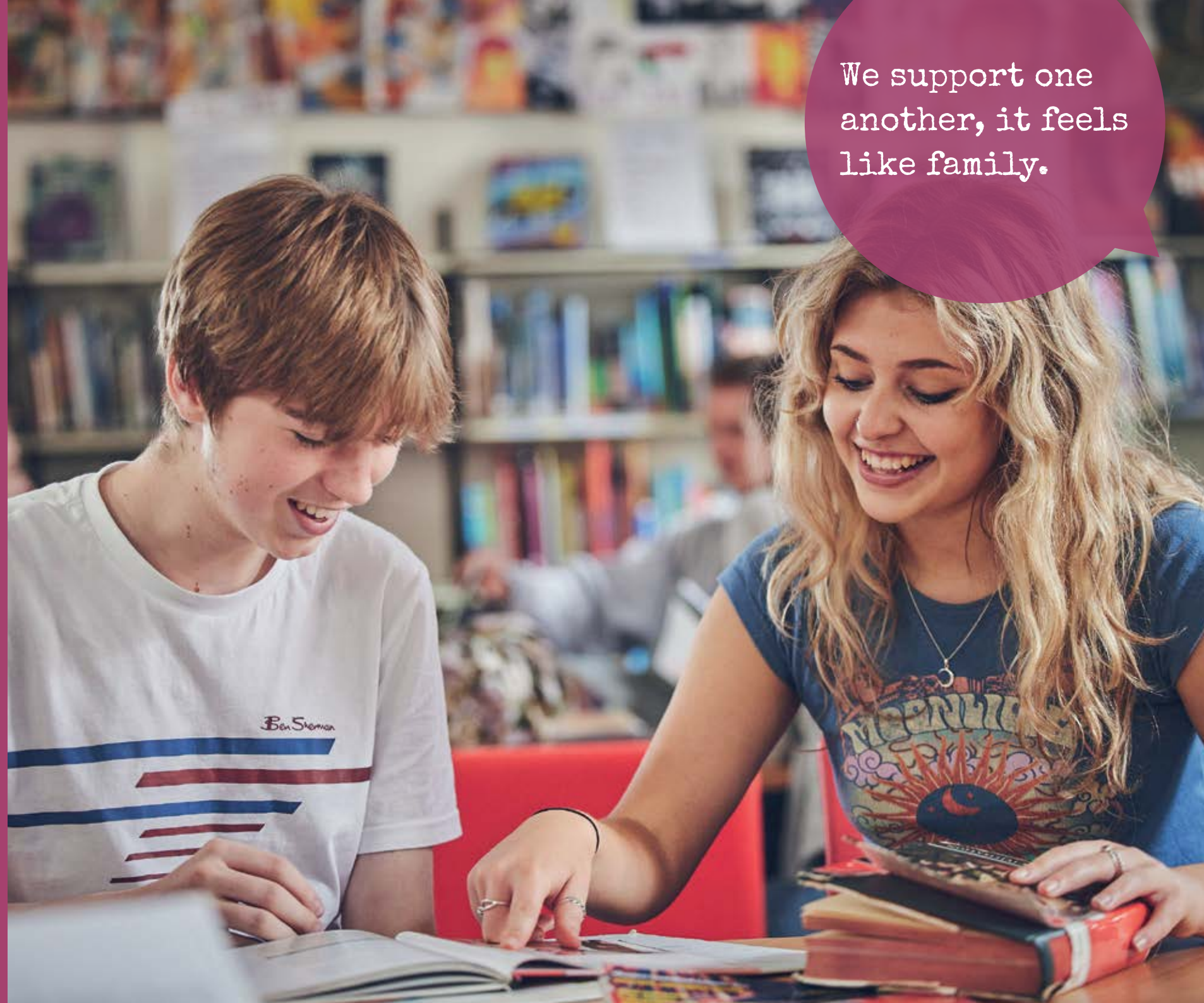
To obtain an A level, students need successfully to complete the mandatory pure core together with two optional units. The optional units must be selected from Statistics, Mechanics, Discrete Mathematics and Additional Pure – these choices will be made based on the interests and strengths of the students in the group.

The assessment consists of four 90 minute exams at the end of the course. There will be an opportunity to take an AS exam at the end of Year 12.

What can I do afterwards?

An A Level in Further Mathematics is accepted as an entry qualification to almost any University course, from Medicine to Astrophysics.

EXAM BOARD > OCR - A





Teachers are really supportive and available when you need them.

Anna, Year 13

BTEC LEVEL 3 EXTENDED CERTIFICATE IN MUSIC PERFORMANCE

Is this course for me?

If you love Music and are keen to develop your talent and abilities in this area- yes! This course allows students to hone their composition skills whilst developing a deeper understanding of music theory and notation, become a more skilful performer and learn about how to manage Music events and a successful career in the Music industry.

Performing and other practical work is central to the course so it is a brilliant course for anyone who enjoys performing and composing and wishes to refine their technique. The course also allows students to focus on the genre of Music that they enjoy creating and playing as well as developing their own unique style.

What qualifications do I need?

A GCSE grade 6 in Music is desirable for the BTEC course. You should have considerable performance experience and should have performance skills on at least one instrument or voice to at least grade 5 standard or the equivalent. The course is not suitable for those who have no background in, or aptitude for Music.

What does the course involve?

BTEC Extended Certificate in Music Performance

1. Practical Theory and Harmony
2. Professional Practice in the Music Industry
3. Ensemble Music Performance
4. Optional units- Solo Performance/Composing Music/Session Musician

How will my work be assessed?

BTEC Level 3 Extended Certificate Music Performance is assessed throughout the course with two units which are assessed through internal assignments and two which require external assessments. This will include composition technique exercises, notation guides, rehearsal logbooks, performances, event planning, presentations and performances. The way in which the course is assessed is extremely varied.

What can I do afterwards?

The course would allow further study of Music at Higher Education level. The course is excellent at beginning to prepare students for a career in the Music industry however, the skills that are established on the Music courses have a wide application in a huge variety of occupations. Confidence, creativity, organisation, planning, target setting and teamwork are developed during this course and are integral to success in any field.

EXAM BOARD > EDEXCEL

BTEC LEVEL 3 NATIONAL EXTENDED CERTIFICATE IN PERFORMING ARTS

Is this course for me?

If you love performing or wish to learn more about or work in the performing arts then yes!

This course gives you frequent opportunities to perform original devised work and published works, repertoire and improve technique in the performance disciplines of Acting, Dance, Physical Theatre and Musical Theatre. It is highly vocational and will begin to train you for a career in the Performing Arts industry.

The course develops qualities of imagination, sensitivity and artistic knowledge. The study of specific practitioners and rehearsal technique introduces you to the commercial, cultural, social and historical contexts in which the performing arts operate and each section of the course offers the opportunity for reflection, evaluation and development. The course also allows a focus on one strand, if a student has a preference, be it Acting, Dance or Musical Theatre.

What qualifications do I need?

A GCSE grade 5 in Dance, Drama or Music is desirable but not essential; however you should have some performance experience in at least one of the art forms. You do NOT have to be skilled in all the art forms as the course allows you to develop skills in one or more of the disciplines. This course is not suitable for students who have no background in, or aptitude for the performing arts.

What does the course involve?

This two year course allows you to gain a taste and appreciation of performing arts, through knowledge and experience of the performance process. Focus is on developing practical skills and techniques in one or more performing arts disciplines, as well as critical analysis skills and contextual understanding of practitioners' work.

One of the highlights of the course involves performing in a full scale musical. Most recent performances have included: Legally Blonde (2022), Bonnie and Clyde (2021) and Our House (2020) which are normally held at the Barnfield Theatre but we have also performed a wide range of other musicals including Sweeney Todd and Les Misérables.

Course Content

- 1 Investigating Practitioners' Work (Mandatory)
- 2 Developing Skills and Techniques for Live Performance (Mandatory)
- 3 Group Performance Workshop (Mandatory)
- 4 Example Optional Units (one of which will be taken)
 - Acting Styles
 - Improvisation
 - Musical Theatre Techniques

How will my work be assessed?

Two units are assessed through internal assignments and two units are external assessments. This will include videos of performances and recitals, rehearsal log books, directors' and actors' notes and written commentaries.

What can I do afterwards?

This course would allow further study of one or all of the art forms at Higher Education level. The skills that are required in the arts have wide application in occupations beyond the Performing Arts industry. Confidence, creative and communication skills, and the ability to work as part of a team are developed during this course and are integral to success in it. These qualities are transferable to any other subject or higher education course but are also highly desirable in any field of further education.

EXAM BOARD > EDEXCEL

PHOTOGRAPHY

Is this course for me?

Taking Photography as an A Level at Clyst Vale means that you are joining a popular course which has a track record of outstanding results. You will have the opportunity to experiment and learn new practical skills and processes in digital photography, animation and film.

Photography may give your option choices a good balance, or may lead to further studies and a career in the artistic industries. It is also possible to do a one or two year AS qualification which can add greater flexibility to your option choices.

What qualifications do I need?

A grade 5 in GCSE Art and Design or Photography would be an advantage.

What does the course involve?

Year 12 - Coursework project that develops skills in digital photography, image manipulation and animation and film.

Year 13 - Coursework project that explores your own personal response to a set theme and builds upon knowledge already gained. You will also need to complete a personal study along with supporting research and practical outcomes. In addition you will need to produce a research sketchbook on the exam theme leading to a controlled test of 15 hours.

How will my work be assessed?

Work is continuously assessed and summative assessment is made at the end of projects and units. 60% of your final grade comes from coursework and 40% is based on the externally set exam that takes place in year 13.

AS Level is 100% coursework with no exam.

What can I do afterwards?

Students may wish to continue their education in Photography, Media Studies or Art and Design at University or may look to do a Foundation year at Art College. A Level Photography could lead onto a career in filmmaking, television, journalism, website design and any media based employment.

Skills developed on this course, such as research, negotiation, problem solving and teamwork can put you in direct competition with more traditional graduates giving you an even greater pool of opportunities to consider.

EXAM BOARD > Eduqas

PHYSICAL EDUCATION

A Level PE and BTEC Level 3 Sport

The PE department will be offering the A Level or the BTEC Level 3 Sport with a view to running the course best suited to the new cohort of applicants.

What qualifications do I need?

BTEC Level 2 Sport at Merit Standard or above, or GCSE PE grade 5 or above, or four GCSE grades (including Science) at grades A*-C / 9-4.

What does the course involve?

A Level PE

There is an exciting and broad range of topics to maintain interest and challenge across the two years and will contribute 70% of the marks.

Section A: Applied anatomy and physiology

Section B: Skill acquisition

Section C: Sport and society

Culminating in a 2 hour exam involving multiple choice, short answer and extended writing questions.

Section D: Exercise physiology and biomechanics

Section E: Sport psychology

Section F: Sport and society and technology in sport

Finishing with another 2 hour exam involving multiple choice, short answer and extended writing questions.

Students assessed as a performer or coach in the full sided version of one activity with post event analysis contributing 30% of the marks.

BTEC Level 3 Subsidiary Diploma in Sport (equivalent to 1 A Level)

BTEC Sport offers a broad range of stimulating and challenging topics relevant to modern society, sport and leisure.

Units:

- Anatomy & Physiology
- Fitness Training for Health, Sport and Well-being
- Professional Development in the Sports Industry
- Sports Leadership

All units assessed through portfolio assignments, which are set and marked by your teachers.

The course is highly practical, so you will be expected to perform, coach and officiate in a variety of sports as well as participate in a number of fitness sessions.

What can I do afterwards?

You can look to progress onto higher education programmes at other institutions, for example Sports Studies, Sports Management or Sports Science. It also opens opportunity for students to apply for employment in areas similar to subjects studied such as radiography and nutrition.

EXAM BOARD >
A LEVEL - AQA
BTEC - EDEXCEL/PEARSON



PHYSICS

Is this course for me?

Yes if you tick all of these boxes:

- like problem solving
- have good mathematical skills
- enjoy finding out why things are the way they are
- are willing to work hard and complete all class-based and home-based tasks
- are self-motivated
- enjoy STEM (Science, Technology, Maths, Engineering)
- like a challenge

What qualifications do I need?

- GCSE grade 6 in Combined Science
or
- Grade 6 in Physics GCSE (separate sciences)
and
- Grade 6 minimum in GCSE Maths
- Grade 5 in GCSE English

What does the course involve?

The Year 12 course is very interesting, covering many of the basics about the rules of our universe. The Year 13 topics are even more rewarding, covering some even more 'glamorous' areas of Physics and introducing more of the applications of Physics.

In Year 12 you will study:

- Measurements and their errors
- Particles and radiation
- Waves
- Mechanics and materials
- Electricity

In Year 13 you will study:

- Further mechanics and thermal physics
- Fields and their consequences
- Nuclear physics

Plus one of the following optional topics to be decided by teachers and students:

- Astrophysics
- Medical physics
- Engineering physics
- Turning points in physics
- Electronics

How will my work be assessed?

You will be given weekly homework that uses questions related to the work you have done in lessons. These are sometimes extended, or repeated practice, or past-paper exam questions.

You will also keep a logbook of the 6 'Required Practicals' per year. These will be tested in the A-level Paper 3 (though there is no official 'coursework', 50-60% of this paper will relate to the Required Practicals)

Examinations

Full A level 3 x 2 hour papers, no coursework tasks or controlled assessments.

What can I do afterwards?

Physics is the route to so many careers, from predicting climate change to designing computer games. Just a few of the possible career paths include Pyrotechnician, Particle Physicist, Astrophysicist, Surgeon, Aeronautical Engineer, Sound Engineer, Clinical Scientist, Solar Energy Physicist, Accountancy and Teaching, in fact any role that requires a high degree of numeracy and/or a deeper understanding of the laws of Physics. More career ideas at www.iop.org/careers-physics/your-future-with-physics/useful-careers-links

EXAM BOARD > AQA

POLITICS

Is this course for me?

As Barack Obama has said "I always believe that ultimately if people are paying attention then we get good government and good leadership. When we get lazy as a democracy and civically start taking shortcuts then it results in bad government and politics".

Political decisions have a huge impact on our lives. One quick definition of politics is the study of who gets what, when and how. I want all of my A Level students to realise just how important political decisions are and to have a good understanding of the nature of politics in the UK and the USA. I want my students to work hard but also become interested in this endlessly fascinating subject. If you are interested in people, current events and international relations then this would be an excellent subject to study in depth.

What qualifications do I need?

Politics at A Level requires good literacy skills. Grade 5 for GCSE English is a minimum requirement for this subject.

What does the course involve?

All of the exams are at the end of year 13. There is no coursework.

Paper 1: Government and Politics of the UK - 2 hours written exam

Paper 2: Government and Politics of the USA - 2 hours written exam

Paper 3: Political Ideas - 2 hours written exam

Coming to sixth form allowed me to do the courses I wanted with the teachers I knew.

Hannah, Year 12

How will my work be assessed?


Three written exams each 2 hours long. All of equal weight.

What can I do afterwards?

The Politics A level is well regarded by Universities and employers. Former students have gone on to study Law, International Relations and Politics degrees at University.

EXAM BOARD > AQA





We are treated like the young adults we are becoming.

PRODUCT DESIGN

Is this course for me?

Think about the objects that you love. Your mobile phone with its delicious curves was designed on a computer screen. The car you yearn for started life as a reduced size clay model. A building that you admire sprang from the drawing board of an architect. And it's not a new phenomenon. Our fascination with 3D design goes back to flint arrow heads and earthenware pots.

As a Product Designer you are at the crossroads of a number of skills. Of course you need creativity, in order to imagine the shape and function of the object. But you'll also need to know about manufacturing processes, materials and marketing.

What qualifications do I need?

You must have at least 4 good grades at GCSE including **a grade 5 in Design and Technology.**

What does the course involve?

This creative and thought-provoking qualification will give you the practical skills, theoretical knowledge and confidence to succeed in a number of careers, especially those in the creative industries.

You will investigate historical, social, cultural, environmental and economic influences on design and technology, whilst enjoying opportunities to put our learning into practice by producing prototypes of your choice.

You will gain real understanding of what it means to be a designer, alongside the knowledge and skills sought by higher education and employers.

How will my work be assessed?

Examinations

- 2 written exams: 2 hours and 30 minutes and 1 hour and 30 minutes
- Mixture of short answer and extended response questions.
- 50% of A-Level

Practical application of technical principles, designing and making principles.

- Substantial design and make project
- 100 marks
- 50% of A-Level

Evidence

- Written or digital design portfolio and photographic evidence of final prototype.

What can I do afterwards?

Product Design could take you into a number of exciting career paths. Of course there's product or automotive design. But what about computer generated cartoons? Or maybe CAD for industry appeals to you more? This course could take you into architecture, teaching, manufacturing, fashion, advertising or engineering.

Product Design goes well with other subjects. If you want a career in design you might also consider Art & Design, Computing or Physics as companion A Levels.

EXAM BOARD > AQA



“The careers advice at Sixth Form is so influential in understanding the direction in which you're wanting to take.”

Amelia, Year 12

PSYCHOLOGY

Is this course for me?

Until you try it, you won't know. If you are a 'people watcher', if you enjoy thinking about why people behave in the way that they do or if you want to understand yourself better, then this course might be for you. If you are someone who enjoys discussing ideas or theories as well as criticising these, then this course might be for you. If you think you have a good understanding of human behaviour, then this course might be for you.

What qualifications do I need?

You need a minimum of 3 GCSEs at grade 6 including English, Science and Mathematics. The course assumes no previous knowledge of Psychology, just a willingness to work hard and complete all work set. The course now involves lots of statistical applied questions, so very good Maths knowledge is essential.

What does the course involve?

In Year 12 students will study Social Influence, Memory, Attachment, Approaches in Psychology, Psychopathology Research Methods and Biopsychology.

In Year 13, A Level students will go on to study Issues and Debates in Psychology, Relationships, Stress and Aggression.

How will my work be assessed?

There is regular testing of class based work and home learning. There is also extended writing practice.

At the end of Year 13 you will sit three written exams of two hours each comprised of multiple choice, short answer and extended writing questions.

In order to be able to develop your skills, knowledge and understanding in Psychology, at least half of the marks for A Level will require the applied use of mathematical skills.

What can I do afterwards?

Psychology is a relevant course for anyone who wants to work with people and there are very few jobs where this will not be the case. Your knowledge and understanding of human behaviour and what motivates people will prove invaluable to you as an individual and in any work that you do.

EXAM BOARD > AQA SPECIFICATION A

RELIGIOUS STUDIES

PHILOSOPHY, ETHICS & EASTERN THOUGHT

Is this course for me?

Do you enjoy asking difficult questions? Have you ever wondered who decides what is a right or a wrong action? Do you enjoy debating? Do you have an open mind? Have you ever thought about how people decide to behave in certain situations? Do you find other people's opinions and ideas interesting? Do you hate coursework?

If you have answered yes to any of the above questions, then this course is for you!

What qualifications do I need?

The exams for this course are all essay based, so you will need to have a grade '5' or above in English Literature or Language.

You do not need to have taken the B & V Full Course GCSE, neither do you need to have a high Short Course Grade.

What does the course involve?

The course is divided into 3 components Philosophy, Ethics and Eastern Thought.

Philosophy is an ancient tradition of trying to finding answers or knowledge. You will look at ancient Greek ideas about how we find knowledge and how this links to the common Western idea of God. You will then study a number of scholars' arguments about the existence or non-existence of God. You will explore the idea of religious experiences, whether there is a life after death, how people can use language to talk about God and what God is like.

In Ethics you will explore a variety of ethical theories and apply these theories to two contemporary issues. Alongside this we will debate surrounding and significant idea of conscience and sexual ethics and the influence on ethical thought of developments in religious beliefs.

In the Eastern Thought component you will explore Buddhism in depth. You will begin by exploring the origins of this world religion, its core concepts and the key teachings attitudes and practices. You will look at the importance of scriptures, religious practice, and consider later Buddhist developments and Ethics.

How will my work be assessed?


There are three 2-hour exams.

What can I do afterwards?

Philosophy, Ethics & Eastern Thought is highly rated as an academic subject. As an A-level it is looked upon favourably by universities as it shows that candidates are open-minded and have researching and evaluation skills.

This course is also useful for any job which involves working with people such as social services, police, civil services, law, medicine, teaching and more.

EXAM BOARD > OCR

A large background image showing two male students in a library. One student, wearing a black Under Armour t-shirt, is sitting at a desk and smiling at the camera with his hand on his chin. The other student, in a grey hoodie, is seen from the side, looking towards the first student. Bookshelves filled with books are in the background.

A relaxed atmosphere but with a strong emphasis on work ethic.

SOCIOLOGY

Is this course for me?

This Sociology course provides you with an exciting opportunity to gain a deeper understanding of the world around you and reflect on the social issues of modern contemporary society.

Over the two years, we will study a variety of themes including Socialisation, Culture, Identity, Power, Control and inequality within our society.

Throughout the course we will explore and debate a variety of questions enabling us to develop a greater understanding of the world around us.

What impact does digital communication have on social relations?

How do sociologists investigate inequality?

What are the patterns and trends in crime in relation to social class?

What qualifications do I need?

The exams for this course are all essay based, so you will need to have a grade 5 or above in English Literature or Language. You do not need to have taken Sociology at GCSE.

What does the course involve?

This is a two year course, divided into 3 components.

- Socialisation, Culture and Identity
- Researching and Understanding social inequality
- Debates in contemporary society

How will my work be assessed?

There will be three written exams at the end of the course. One exam on each component.

What can I do afterwards?

A fantastic option if you are going onto university to study any subject and useful in all Jobs. However If you are considering a career where you work with people, or specifically within the public sector such as teaching, police, social work, research then this is the choice for you!

EXAM BOARD > OCR



SPANISH

Is this course for me?

If you enjoy languages and current affairs, this could well be the course for you. Spanish is growing in popularity in schools throughout the UK and because it is a global language, it is highly sought after by employers. To be successful in languages, you have to enjoy reading and have an eye for detail. Learning Spanish is enjoyable and the culture of the Spanish speaking world is very diverse.

What qualifications do I need?

You will require a grade 6 or above at GCSE.

What does the course involve?

The course will involve the four skills, namely reading, writing, listening and speaking. Each has equal weighting. You will be required to understand journalistic texts taken from the Spanish press and media. You will have to express your own opinions on topical issues. There will be a greater emphasis on grammar, translation from English into Spanish and an awareness of literary texts and film is also an important component of the course.

How will my work be assessed?

Your work will be externally examined for all components of the course; there is no coursework.

You will sit three papers:

Paper 1: Listening, reading and translation.

Paper 2: Speaking which involves responding to written texts about Spanish culture.

Paper 3: Writing, which involves translation and grammar exercises, as well as responding to a literary text and a film in the Spanish language.

There will also be a speaking examination which is recorded and marked externally.

What can I do afterwards?

You can combine Spanish with any other qualification, for example – accountancy, engineering, commerce or medicine. This will enable you to work in Spain or Latin America. If you want to work directly with languages you could become an interpreter, translator, tour guide or foreign correspondent.

EXAM BOARD > AQA

LEVEL 3 EXTENDED PROJECT QUALIFICATION (EPQ)

Students have the opportunity to take the EPQ in Year 13 to supplement their A-Levels.

Is this course for me?

This qualification is suitable for students who have a high degree of self motivation and a desire to study a topic in depth. Lessons will involve learning the skills necessary to complete the project, such as research techniques and referencing. The final coursework should be around 5,000 words in length.

What qualifications do I need?

A GCSE grade 4 in English Language is desirable. The project is significant in length, so the ability to write well is beneficial.

What does the course involve?

Students need to select a topic that they are interested in studying in great detail. We have had a range of topics in recent years including:

- The Arab Spring: 'An Orwellian Realisation?'
- With specific reference to the Rugby World Cup in South Africa in 1995; 'How can sport play a role in developing and uniting a nation?'
- What was the most significant factor in the development of mathematical calculus?
- How should the UK deal with energy demands in a changing climate?

The choice of subject area is entirely up to the student and the EPQ supervisor. The most important considerations are 1) Is the student genuinely interested in this topic? 2) Is it possible to find a range of books, articles and websites to research the topic in detail?

How will my work be assessed?

In addition to writing a project of around 5,000 words each candidate must produce a log book showing their progress throughout the course. They must also present their findings to the group. This is usually done through a powerpoint presentation. Questions are then asked by the group and have to be answered by the candidate.

It is graded like A-Levels (A-E grades are available) and is worth 50% of an A-Level in terms of UCAS points.

What can I do afterwards?

This course should provide students with a wonderful opportunity to study a topic area in depth. Typically students pick a subject which is relevant to the course they are going on to study at university, so it furthers their understanding of that specific subject. It is a highly regarded qualification and universities in particular appreciate that if a student does well in the EPQ this is a good indicator of aptitude for University study.

Exam Board > AQA

**OPEN
EVENING**
**THURSDAY 9TH
NOVEMBER 2023
6-8PM**

ClystVale
COMMUNITY COLLEGE
A Science, Maths and Computing Academy

Clyst Vale Community College

Station Road, Broadclyst,
Exeter, Devon EX5 3AJ

Telephone 01392 462697
www.clystvale.org

